



Seven Bridges Trail (to Jones Park)



The **Seven Bridges Trail** is a beautiful hike that criss-crosses South Cheyenne Creek over a series of seven bridges. This is a very popular trail that is often made shorter by only hiking to the seven bridges and then turning back. This shorter route is only 3.2 miles round trip. There are many alternative hikes stemming from this trail. This trail guide describes the hike leading to the Jones Park area.

[Click here to view photos of this trail](#)
(Password = havefun)

Use of Trail:	Hiking / Biking / Horse Riding
Length of Trail:	5.48 Miles Roundtrip
Elevation Gain:	7,514 Ft. to 9,086 Ft. / 1,572 Ft Gain
Hiking Difficulty:	Moderate (see ratings here)
Fees / Permits:	None
Trail Contact:	US Forest Service, 601 S. Weber, Colorado Springs, CO. 80903 (719)636-1602
Approx. Hiking Time:	3.5 Hours Roundtrip
Terrain Type:	Wooded / Open / Meadows / Hilly
Trail Characteristics:	Single Track – Dirt / Gravel
Views:	City of Colorado Springs
Pets:	Permitted on Leash Only
Other Nearby Trails:	Mt. Buckhorn / Bear Creek Canyon / Pipeline / Seven Bridges to Nelson Camp Forester Trail
Geocaches / Letterboxes:	Yes

GPS Waypoint Files are also available for this trail. This file includes the GPS waypoints for each trail feature listed and can be accessed and downloaded directly to your GPS unit.

[Click here for the instructions on how to download the GPS waypoint file.](#)

[Click here to download the GPS waypoint file for this trail.](#)

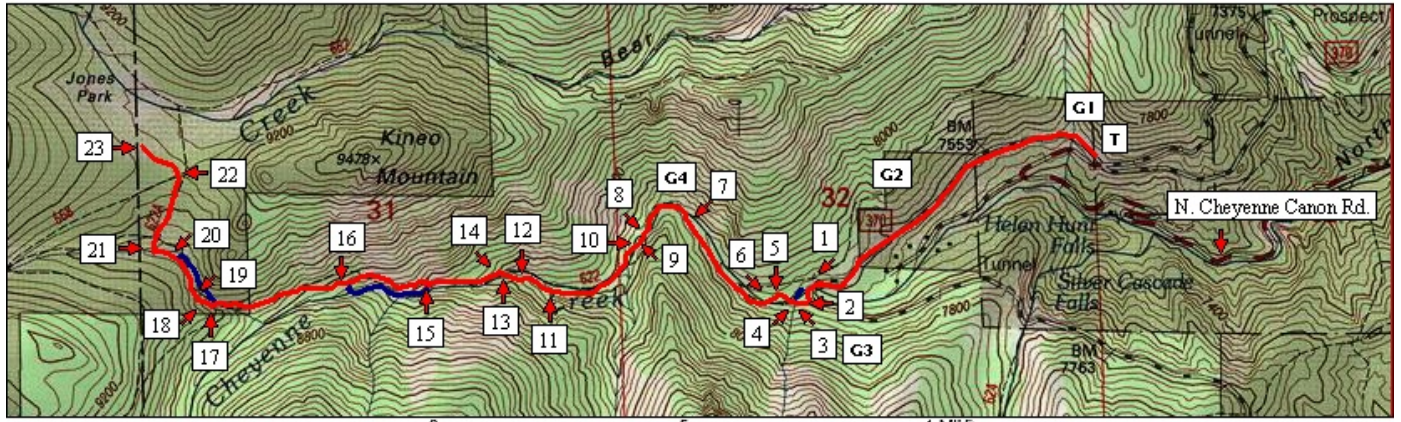


Seven Bridges Trail
(to Jones Park)

Trail
22

Trail Map

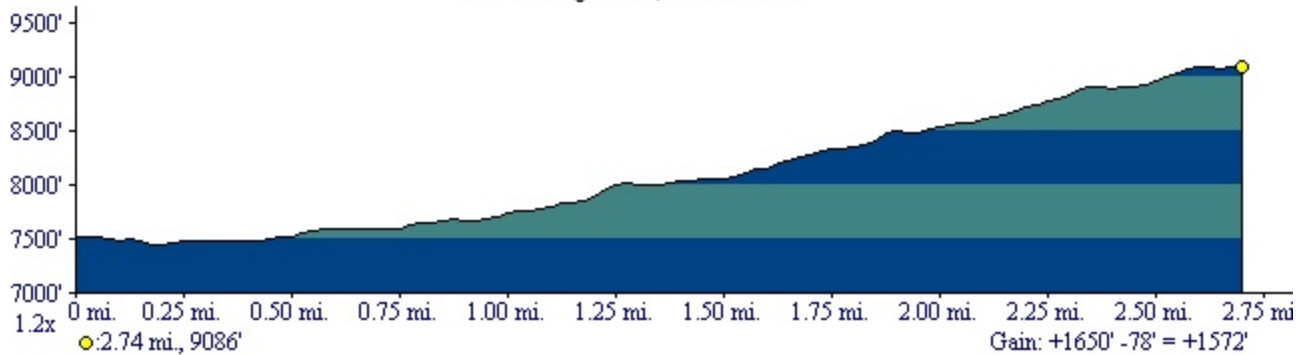
Seven Bridges Trail



TN/MN
10°

Map created with TOPO!® ©2003 National Geographic (www.nationalgeographic.com/topo)

Seven Bridges Trail, to Jones Park



Profile created with TOPO!® ©2003 National Geographic (www.nationalgeographic.com/topo)

Other trails accessible from this trail ([Click on Trail Name Below to Access Trail Guide](#))

- [Mt. Buckhorn](#), [Bear Creek Canyon](#), [Pipeline](#), [Seven Bridges to Nelson Camp](#), [Forester Trail](#)

